



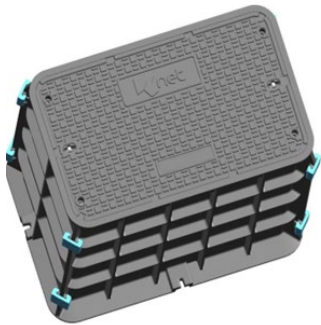
Access Chamber

Model # : ACC-01

The KNET Access Chamber is composed of four composite panels that are assembled into a single unit, facilitating easier packing and transportation. Compared to traditional chambers, this design reduces shipping costs by 50%. The inclusion of vertical and horizontal strength beams ensures that the manhole meets international standards for both the chamber and cover.

Feature

- High-strength SMC molded.
- Knock-down and easy to handle.
- Panels connected with PC clips.
- Knock-out duct hole with sealing cover for long cable looping length.
- Vertical and horizontal structure beam.
- Non-corrosive and non-conductive.
- UV-resistant.
- Longer service life compared to HDPE.



Item	Specifications
Material	SMC (Sheet Molding Compound) Composite
Chamber Inner Dimension	430x760x600mm (L x W x H) 17X30X24inch
Chamber External Dimension	487x818x600mm (L x W x H)
Total Height	600mm 24inch
Loading Capacity	Tier 22, Heavy loads , 22,500 lbs (10,206 kg) of loading
Chamber weight	27.4kg (60 lbs)
Cover weight	24kg (52Lbs)
Accessories	Conduit entry, cable bracket available
Fasteners Material	Polycarbonate



KNET Co.,LTD
www.e-knet.com
inquiry@e-knet.com

This specification is intended as a guide only. Whilst the information it contains is believed to be correct. KNET can take no responsibility for action taken based on the information contained in this document. KNET reserved the right to make changes to this document without notice. All sales of product are subject to KNET's terms and conditions of sales only. Any unauthorized copying of this document or our products is prohibited and KNET will take action to prevent any infringement of it rights and to claim damages for the loss that it suffers.

Document No. : ACC-1-24-1