



FDH(Fiber Distribution Hub)

Model # : K-ridgeHUB 288C

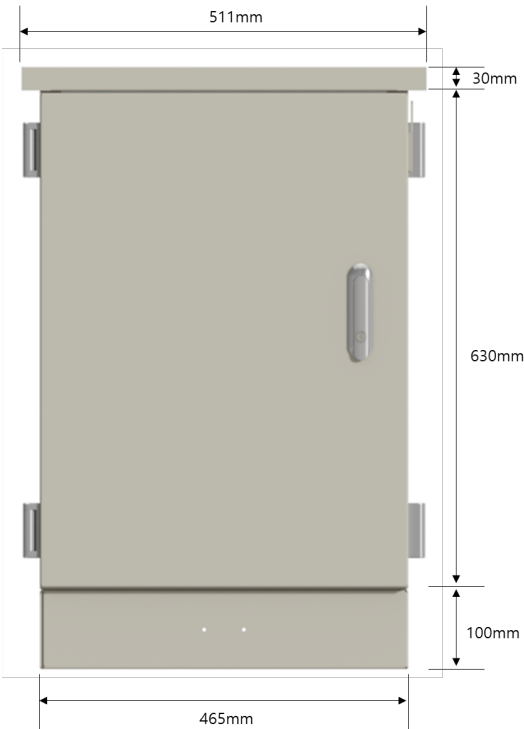
Complete solution for managing up to 288 port distribution fibers for an outside plant FTTx PON application. Cabinet incorporates a modular design, allowing the provider to repair or replace a damaged cabinet, without disrupting existing service. Cabinet includes a new pyramid shaped roof/solar shield and venting ports, providing additional protection for deployed fiber. Mounting options pad/vault mounted with either a 300mm riser.



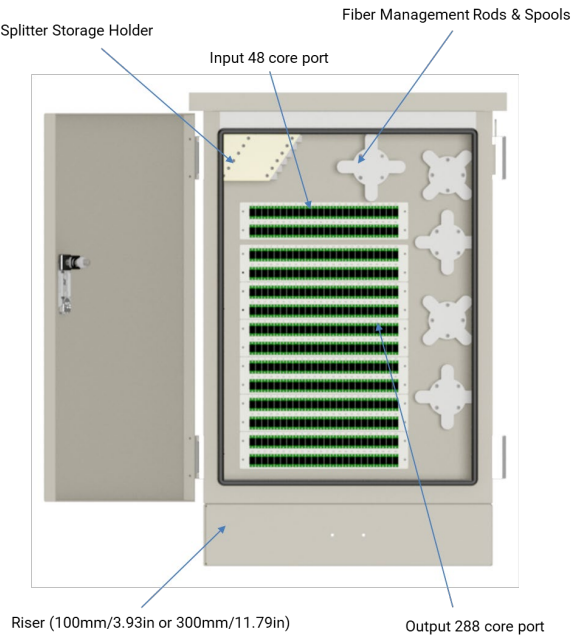
| ITEM | FDH-288C | Remarks |
|-----------------------|--|-----------------------------|
| Material | EGI | 1.2T |
| Dimension (mm/in) | 760H X 465W X 476D (29.92H X 18.3W X 18.39D) | With Riser |
| Dimension (mm) Riser | 100H(300H) X 465W X 476D (3.93H(11.81H) X 18.3W X 18.39D) | |
| Port Density | 288 fiber | |
| Feeder | 48fiber | |
| Cable Entry Trunk In | 2 | C/Gland PG – 13.5 |
| Cable Entry Secondary | 2 | C/Gland PG - 21 |
| Mounting Options | Pole mount | With pole mount Accessories |
| Splitter Slot | 9 (Max.18) | Standard SC/APC |
| Connector Type | SC/APC, SC/UPC, LC/UPC, LC/APC | Standard SC/APC |
| Finish | Powder Coating | Pebble gray RAL 7032 |
| Door | 2 | both sides |

This specification is intended as a guide only. Whilst the information it contains is believed to be correct. KNET can take no responsibility for action taken based on the information contained in this document. KNET reserved the right to make changes to this document without notice. All sales of product are subject to KNET's terms and conditions of sales only. Any unauthorized copying of this document or our products is prohibited and KNET will take action to prevent any infringement of it rights and to claim damages for the loss that it suffers.

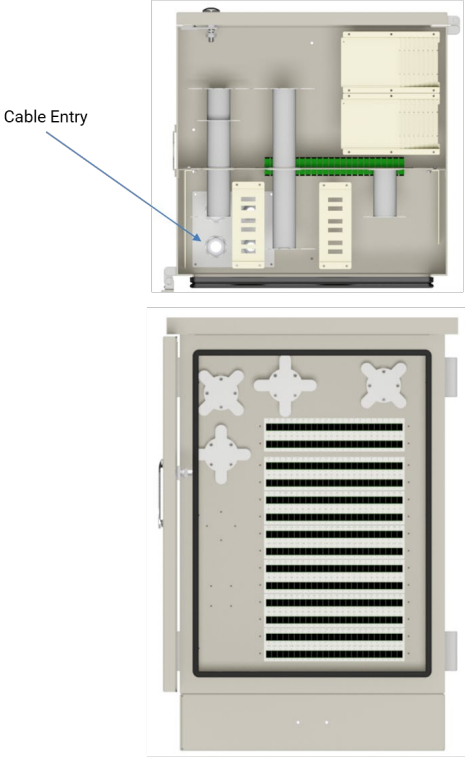




< Front >



< Rear >

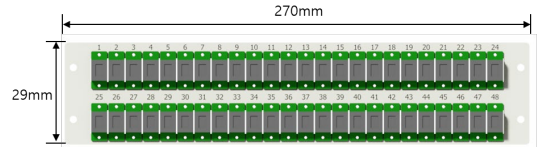
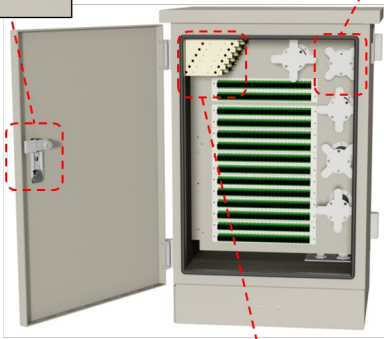
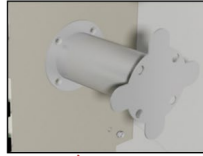


Component

Lock – Standard door Lock
(Material : Stainless steel)

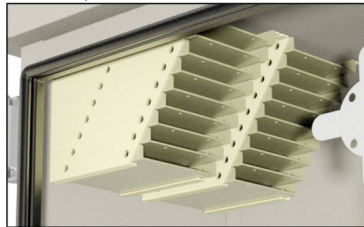


Fiber Management Rods & Spools
(Spool Size : Ø40 x 80mm
Other Size : Ø40 x 135mm)



< Adapter 48Core port>

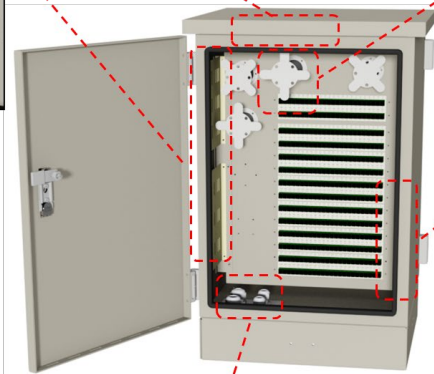
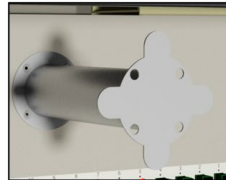
Splitter Storage Holder
Module Size : 100 x 80 x 10mm
(9EA x 2SET)



Cable Entry – Guide Bracket



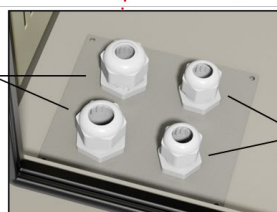
Fiber Management Rods & Spools
(Spool Size : Ø40 x 135mm
Other Size : Ø40 x 80mm)



Guide Bracket

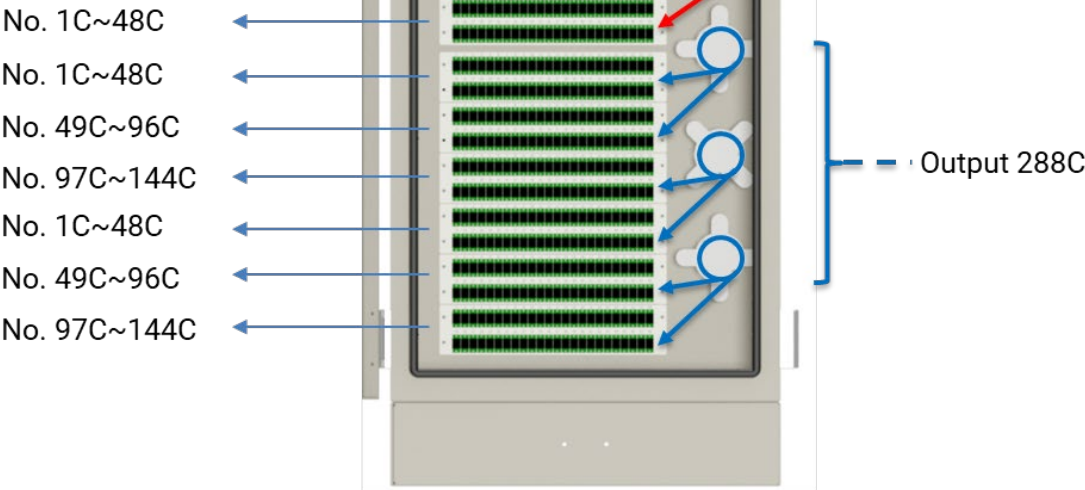


C / Gland (PG-21)
(Cable Dia. 13~18mm)

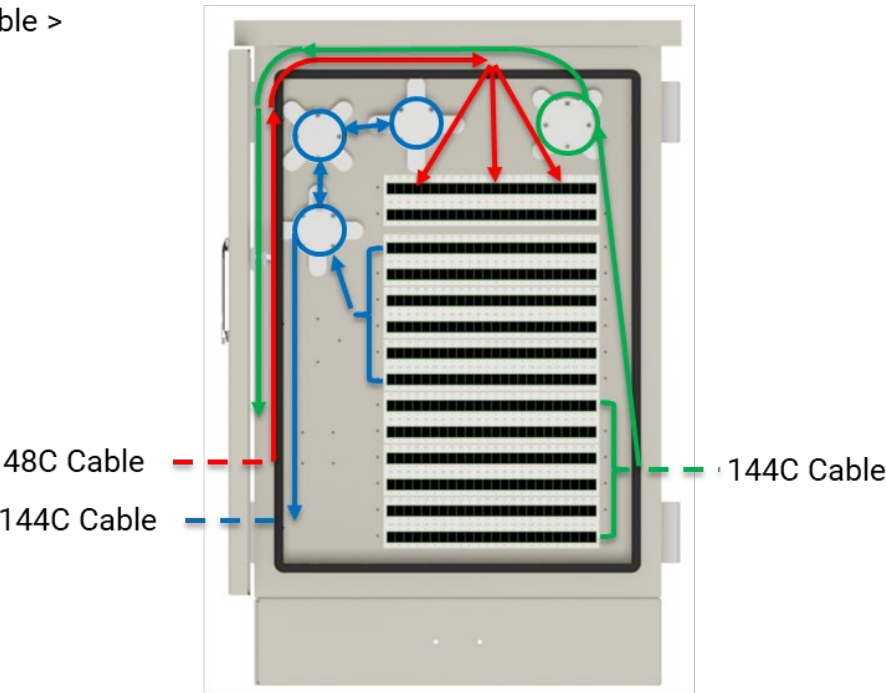


C / Gland (PG-13.5)
(Cable Dia. 6~12.5mm)

< Front – Splitter >

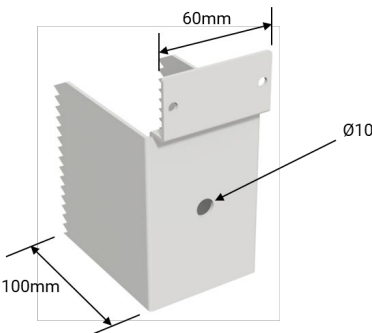


< Rear – Cable >

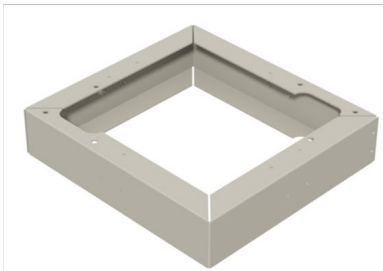


Installation Hardware – Pole Mount & Riser

< Pole Mount >



< 100mm Riser >



< 300mm Riser >

